

Loggia
17.22m²

Wohnen/Essen/Kochen/Flur
31.57m²

BAR
3.49m²

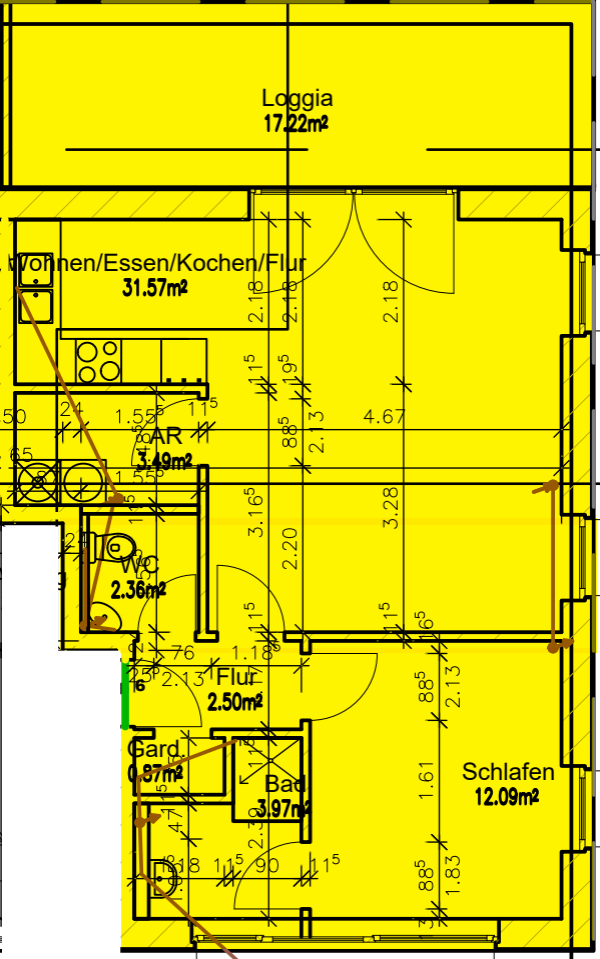
WC
2.36m²

Flur
2.50m²

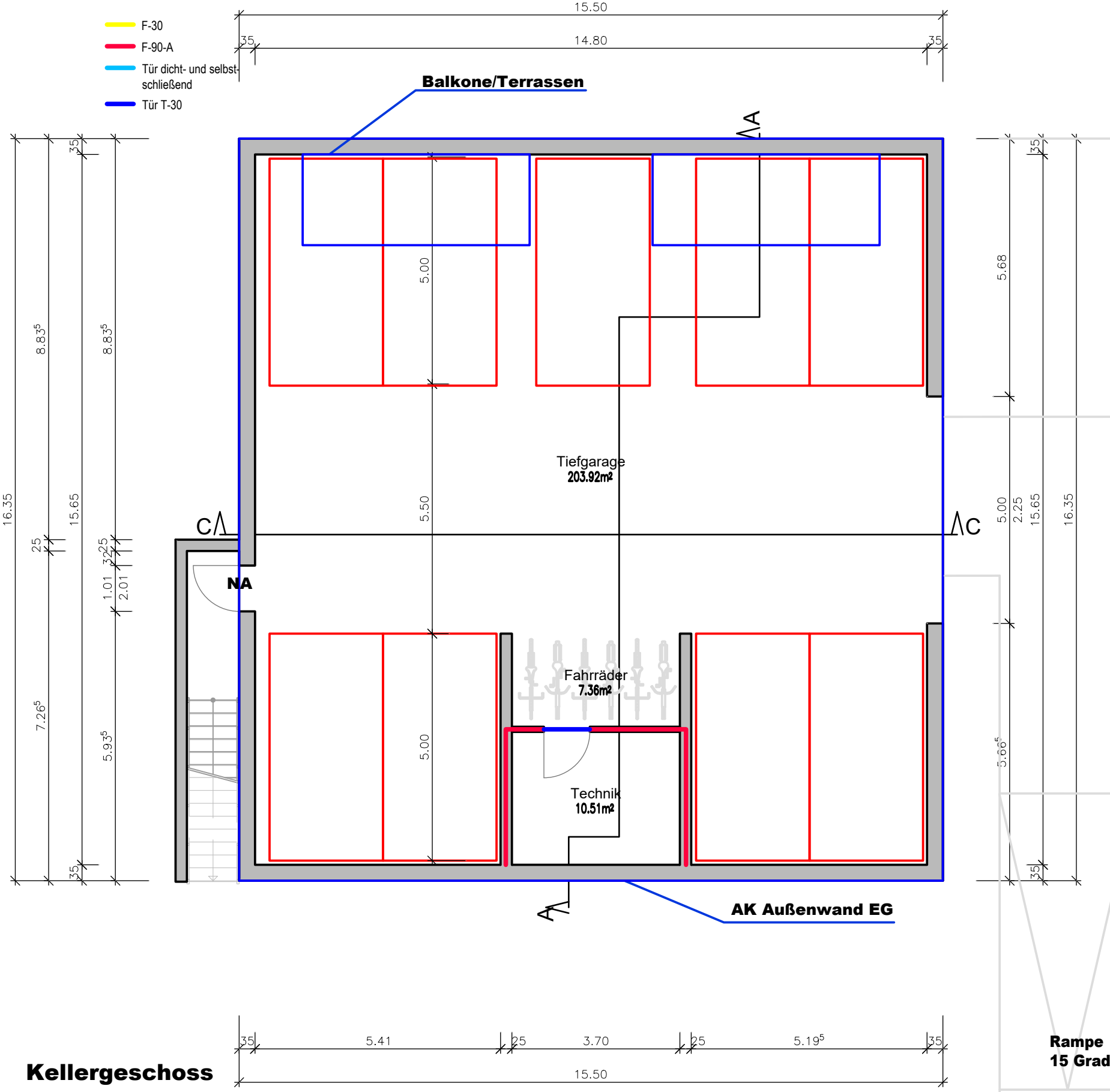
Gard.
0.87m²

Bad
3.97m²

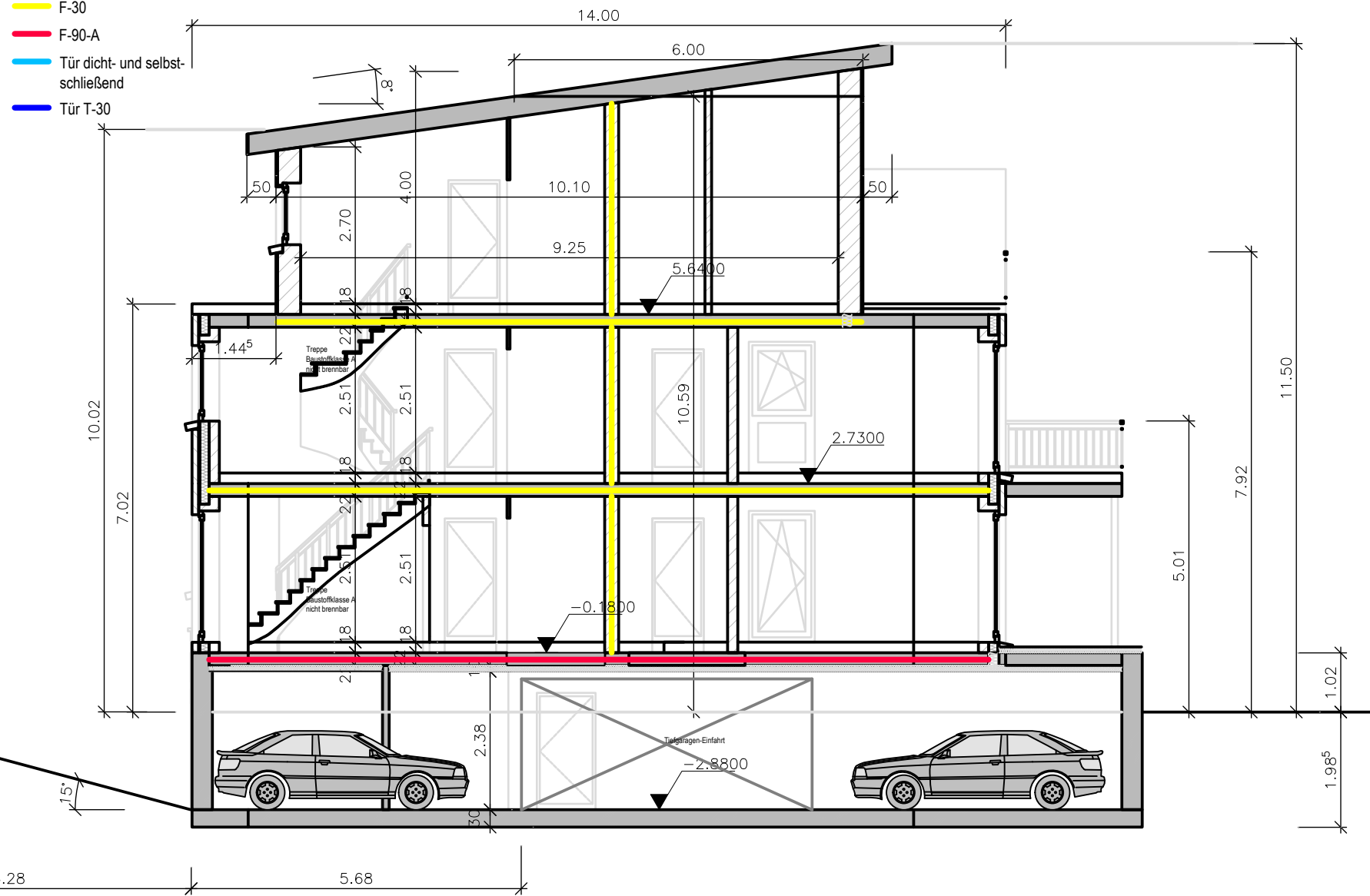
Schlafen
12.09m²



- █ F-30
- █ F-90-A
- █ Tür dicht- und selbstschließend
- █ Tür T-30



- F-30
- F-90-A
- Tür dicht- und selbst-schließend
- Tür T-30



Schnitt A-A